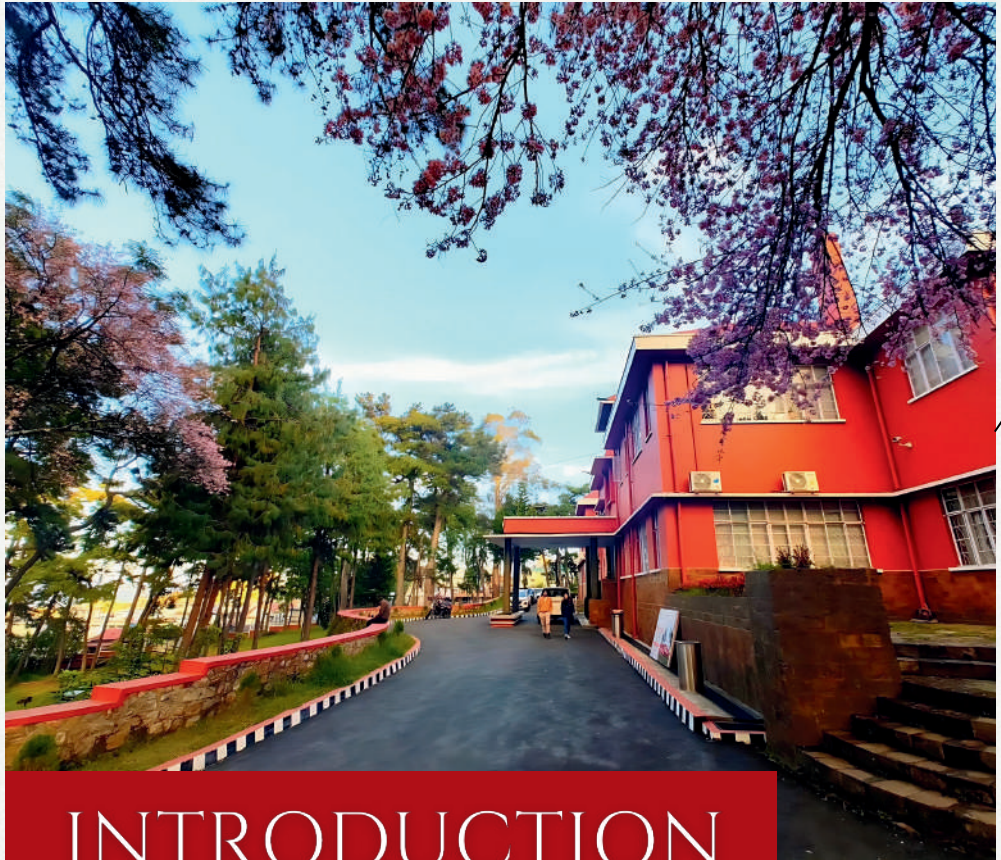


NATIONAL LAW UNIVERSITY MEGHALAYA, INDIA

THE UNIVERSITY OF THE FUTURE



EMPOWERING THE NEXT GENERATION OF LEADERS



INTRODUCTION

Nestled in a hilly region with stunning views, our National Law University Meghalaya (NLU Meg) campus offers a serene environment for study, blending historic charm with modern amenities. We enrich education with outdoor adventures like hiking and camping, and a variety of recreational activities to promote teamwork and social skills. We believe in extending learning beyond textbooks, fostering creativity, personal growth, and a sense of belonging.

NLU Meg is focused on preparing students for a disruptive future, integrating exponential technologies and strategic foresight to transform law and governance. NLU Meg is building a globally networked hub to study and harness disruption for impactful societal change.



VISION

To be a model higher education institution of the future, equipping students across the globe for the future world of continual disruption, incubating leaders, working with governments, judiciary, academia, industry and society for co-creating a transformed world of abundance.





FUTURE DRIVEN



Rapid disruption everywhere calls for reimagining every sector, including law, governance, industry, education and the societal norms, and institutions themselves.



Need to deal with “Future Shock”—the distress, both physical and psychological, that arises from an overload of the human organism’s physical adaptive systems and its decision-making processes.



We are setting up systems to help visualise the future, and develop effective strategies to live and prosper in the era of disruption, today and tomorrow.

REIMAGINING LAW, LEGAL EDUCATION & LEGAL SYSTEMS

The present “post-facto restoration of rights” approach to law cannot deal with the ever-emerging new issues in this era of disruption. We are working on possible new principles, paradigms and frameworks for **Reimagining Law, Regulation & Legal Ecosystems**, and will be ready to provide any assistance that may be required for designing and ushering in the judicial systems and legal profession of the future.

The ever-increasing penetration of technology, including AI, everywhere, will soon make law ubiquitous. We have initiated a research project with our global partners on “proactive legal database on future issues of law” to start developing an in-depth understanding arising from the intersection of law, technology, business, different academic disciplines, and the society.





STUDENTS & FACULTY ACROSS THE GLOBE



We have adopted a new approach to ensure agility of curriculum and pedagogy, responding to the impact of exponential technologies and tapping their power, including action for developing a digital twin and providing education in the metaverse.



Students, both in regular full-time courses and continuing/executive education, will be groomed for legal systems and professions/jobs of the future, with talent for working and leading anywhere in the world.



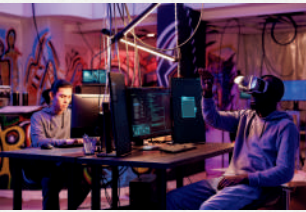
NLU Meg to be a central node in a network of nodes, acting as an organiser, ideator and creator, with students and faculty from all over the world, and drawing on the institutional knowledge and expertise available in the network.

INSTITUTIONAL ARRANGEMENTS



1 Knowledge Management Ecosystem

An innovative AI-driven system centralising all knowledge, resources, and materials in one place (including through global knowledge networks), with ease and speed of access, leading to enhanced efficiency, improved collaboration, seamless integration and knowledge preservation.



2 Immersive Media Lab

A virtual metaverse like Lab will offer significant benefits such as:

- Enhanced learning and teaching for educators
- Practical training for government officials
- Innovation and experimentation for researchers and associates
- Data-driven insights with real-time information
- Collaboration across sectors



3 Partnership Network Team

This team is tasked with forging win-win partnerships across the country/world, as also across all sectors and sections of the society, which is crucial for actualisation of our Vision.



4 A Living Organisation with Pre-designed DNA

The organisation will be an agile, flexible, adaptable, living organism with embedded ability to evolve, driven by purpose, passion and cellular inter-connectedness, with people and technology - powered processes as the core (heart), and knowledge as the life-blood.



5 NLU Meg Foundation — Thinktank | Policy-Mover | Knowledge Partner

An autonomous foundation set up to act as a thinktank for governments and other stakeholders; and a catalyst/initiator/coordinator for bringing major investments and projects to Meghalaya, for economic development and employment benefits, as also to provide opportunities to faculty/students for in-house hands-on research/learning/experience and knowledge generation.

PROGRAMMES

1. UNDERGRADUATE ADMISSIONS

- Bachelor of Arts (Policy Science) and Bachelor of Laws (Hons) [BA LL.B (Hons)]
- Bachelor of Business Administration (Fin Tech) and Bachelor of Laws (Hons) [BBA LL.B (Hons)]
- Bachelor of Science (Data Science) and Bachelor of Laws (Hons) [BS LL.B (Hons)]

ELIGIBILITY

- ▶ First Division/ Class (60% or 6.5 CGPA in 10-point scale) in 10+2 examination.
- ▶ Those who have appeared for the 10+2 examination and are awaiting results are eligible to apply. In such case, they must attach proof of CGPA/ Marks in the Class 10 (Secondary) examination.

APPLICATION FEE

- Application Fee: General Category: Rs. 3,500/-
- Meghalaya State-Domiciled Scheduled Tribes (ST): Rs. 2,000/-

Payment Method: Online payment through designated gateways is mandatory at the time of application submission.

MODE OF SELECTION

On receipt of applications, the same will be scrutinised. For shortlisting of candidates, the following will be considered:

- NLU Meg Postgraduate Admission Test [MEG UAT]
- Personal Interview

The shortlisted candidates from [MEG UAT] will be intimated through email and are required to appear for Online Interviews.

PROGRAMMES

2. POSTGRADUATE ADMISSIONS

- Master of Laws [LL.M (Major in Corporate Law)]
- Master of Laws [LL.M (Major in Criminal Law)]
- Master of Science [MS (Public Policy Analytics)]

ELIGIBILITY

- ▶ First Division/class (60% or 6.5 CGPA on 10-point scale) in Bachelor of Laws LL.B/B.L (5 years) program from any recognised National or International University; OR
- ▶ First Division/class (60% or 6.5 in 10-point scale) in Bachelor of Laws LL.B/B.L (3 years) program from any recognised National or International University along with Bachelors' Degree (not less than 3 years) in Humanities / Science/ Commerce or equivalent.

If the degree awarding Institute/University does not explicitly mention “First Class”, then the eligibility will be a minimum of 60% marks or a CGPA of 6.5 on a 10-point scale.

APPLICATION FEE

- Application Fee:General Category: Rs. 3,500/-
- Meghalaya State-Domiciled Scheduled Tribes (ST): Rs. 2,000/-

Payment Method: Online payment through designated gateways is mandatory at the time of application submission.

MODE OF SELECTION

On receipt of applications, the same will be scrutinised. For shortlisting of candidates, the following will be considered:

- NLU Meg Postgraduate Admission Test [MEG PAT]
- Personal Interview

The shortlisted candidates from [MEG PAT] will be intimated through email and are required to appear for Online Interviews.

PROGRAMMES

3. PhD ADMISSIONS

PhD candidates from various disciplines including Law, Policy Science, Social Sciences, Humanities and Data Science may belong to one of the three categories:

- ◆ Regular Assistantship, Individual Fellowship (CSIR/ UGC/ DBT/ INSPIRE/ ICMR etc.), Project, Quality Improvement Programme (QIP) [under AICTE and UGC], University Employee
- ◆ Sponsored, Working Professional, Hon'ble Judge of High Court and Supreme Court.
- ◆ Foreign Nationals

ELIGIBILITY

- ▶ Minimum 60% marks or a CGPA of 6.5 in 10-point scale in the qualifying examination in Law/ Engineering/ Science/ Commerce/ Management/ Humanities/ Social Science/ MBBS and/or equivalent.
- ▶ Exception will be made for working professionals and the Hon'ble Judges of High Court and Supreme Court for minimum marks requirement.

APPLICATION FEE

- Indian Nationals: Rs. 4800
- Sponsored/Professionals/Judges: Rs. 12,000
- Foreign Nationals: Rs. 6200

The candidate is required to pay the trimester fees until the submission of the thesis. The Doctor of Philosophy (PhD) process will be governed by the National Law University Meghalaya Doctor of Philosophy Regulation 2023.

RESIDENTIAL FEES

House Rent Allowance (HRA): Rs. 18,000/- per month for both Foreign and Sponsored candidates

FACILITIES

- ▶ **Classrooms, Lecture Halls:** State-of-the-art classrooms, lecture halls, auditoriums, halls of residences, cafeterias, sports grounds and fields equipped with modern amenities.
- ▶ **Library:** A comprehensive library with an extensive collection of legal texts, journals, and digital resources.
- ▶ **Moot Court:** Moot court facilities for practical training, competitions, and experiential learning.
- ▶ **Sports Facilities:** NLU Meghalaya's sports facility features a basketball court and two badminton courts, promoting fitness and teamwork. It is a space for both recreational and competitive activities.



UNIVERSITY CLUBS

- Moot Court Society
- Sports and Fitness Society
- Literati Club
- Debating
- Music and Dance Club
- Legal Aid Society





MODE OF ADMISSION

For both Undergraduate and Postgraduate programmes the university entrance:

- MEG UAT (Meghalaya Undergraduate Admissions Tests)
- MEG PAT (Meghalaya Post Graduate Admissions Tests)
- MEG PET (Meghalaya Phd Entrance Test)

are being conducted by the university as part of the admissions processes. This is then followed by a personal interview to select prospective students for the programme(s).

The selection of students of the University shall be subject to reservation policy of the Government. 50% of the seats shall be reserved for State Domiciled Tribes as per the Meghalaya State Reservation Policy 1972 or as amended thereafter.

APPLICATION PERIOD

13th January 2025 - 8th March 2025

ENTRANCE TEST

- **India - 5th April, 2025**
- **International - 5th April 2025**

Since its inception, NLU Meg continues to aspire to be a co-creator of the future, and has an excellent team working together in the spirit of co-founders of start-ups.

We invite all like-minded people, institutions and agencies to join us in our crusade to define and shape our joint future, and that of humanity.



CONTACT US



PHONE

+91 6909372781



EMAIL

admission@nlumeg.ac.in ; outreach@nlumeg.ac.in



WEBSITE

www.nlumeg.ac.in



ADDRESS

National Law University Meghalaya,
Mayurbhanj Complex, Nongthymmai,
Shillong - 793014
Meghalaya, India

Scan via QR code



to visit our instagram profile



nlumegofficial



National Law University Meghalaya



National Law University Meghalaya



National Law University Meghalaya